

Wireless Configuration Document Example Hotel

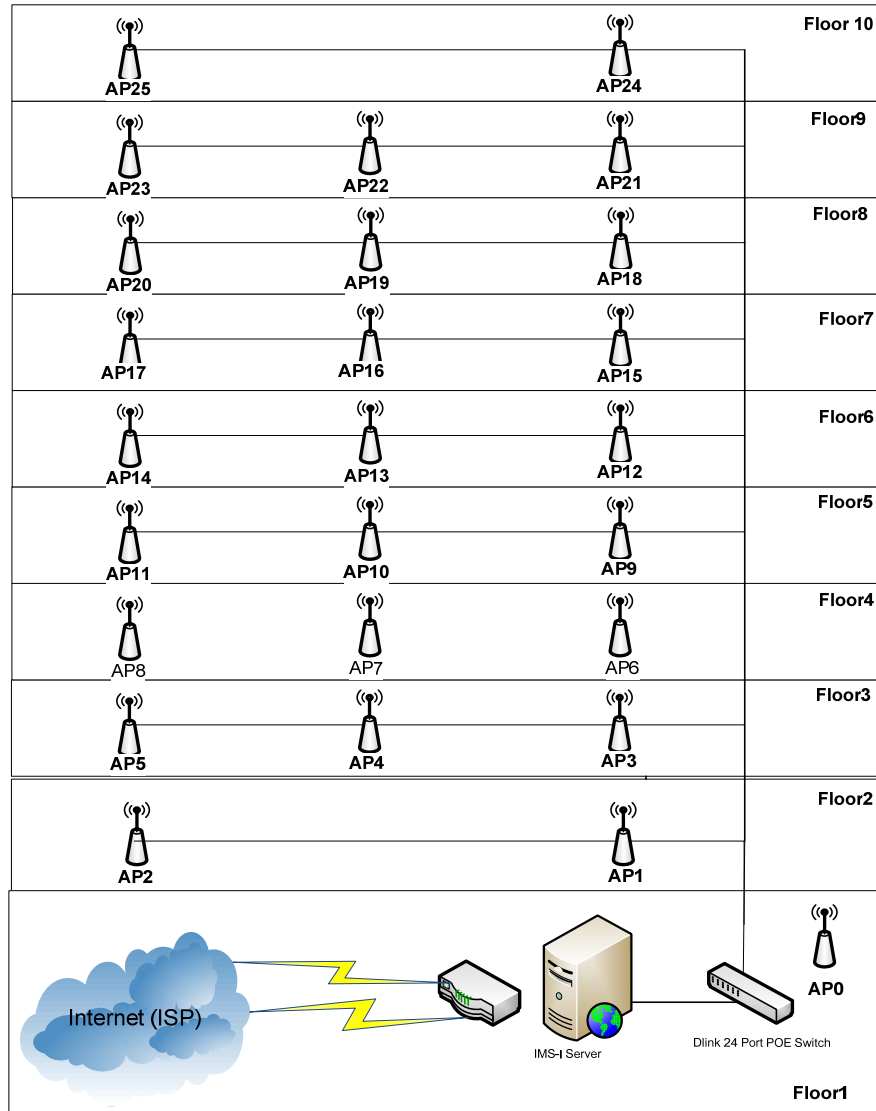
Integrated Management Solution for Internet Service

Author: <Noppadol Phanpanyalert >
Date: <12/11/2007>
Status: <Final>
Version: <1.0>

Heading document control

Revision History

Version	Status	Author	Date	Comments
1.0	Create	Noppadol	01/07/07	Create Document



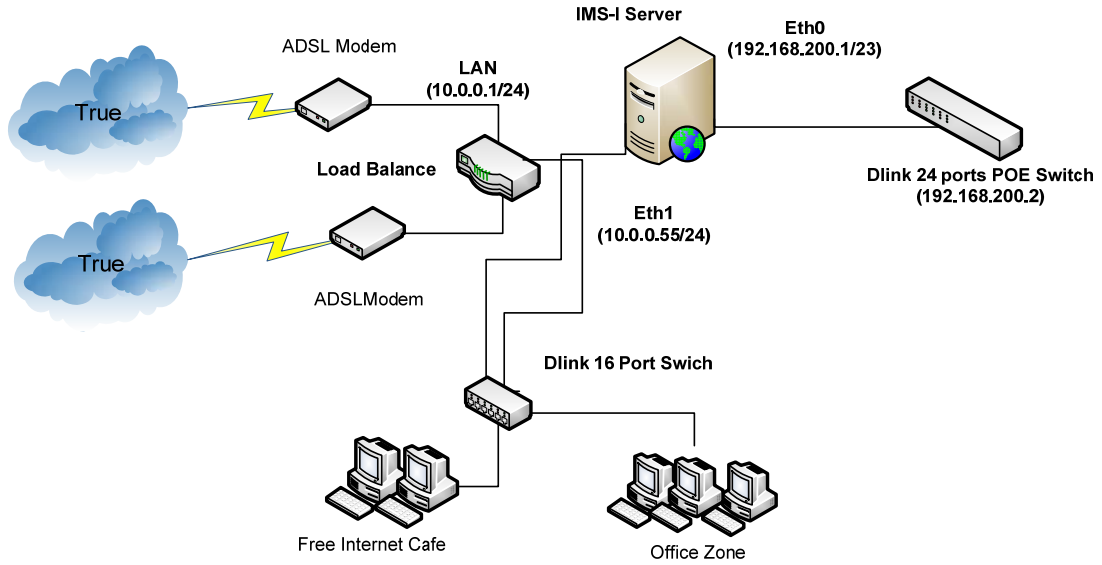
Wireless Designed diagram

Confidential

Access point : Dlink 3200AP POE Build in

AP Name	IP Address	Chanel	Floor	Broadcast SSID
AP0	192.168.200.20	2	1	Example_lobby
AP1	192.168.200.21	7	2	Example_FL2
AP2	192.168.200.22	12	2	Example_FL2
AP3	192.168.200.23	12	3	Example_FL3
AP4	192.168.200.24	7	3	Example_FL3
AP5	192.168.200.25	2	3	Example_FL3
AP6	192.168.200.26	2	4	Example_FL4
AP7	192.168.200.27	12	4	Example_FL4
AP8	192.168.200.28	7	4	Example_FL4
AP9	192.168.200.29	12	5	Example_FL5
AP10	192.168.200.30	7	5	Example_FL5
AP11	192.168.200.31	2	5	Example_FL5
AP12	192.168.200.32	2	6	Example_FL6
AP13	192.168.200.33	12	6	Example_FL6
AP14	192.168.200.34	7	6	Example_FL6
AP15	192.168.200.35	12	7	Example_FL7
AP16	192.168.200.36	7	7	Example_FL7
AP17	192.168.200.37	2	7	Example_FL7
AP18	192.168.200.38	2	8	Example_FL8
AP19	192.168.200.39	12	8	Example_FL8
AP20	192.168.200.40	7	8	Example_FL8
AP21	192.168.200.41	12	9	Example_FL9
AP22	192.168.200.42	7	9	Example_FL9
AP23	192.168.200.43	2	9	Example_FL9
AP24	192.168.200.44	2	10	Example_FL10
AP25	192.168.200.45	7	10	Example_FL10

Confidential



Connection Detail

Global Configuration

Parameter	Value
All Access point User / Password	admin /xxxxxxx
Administration IP for control AP	192.168.200.10
24 Ports PEO Switch IP / Password	192.168.200.2/ xxxxxx

IMS-I Configuration

Parameter	Value
Root password	XXXXXXXXXX
LAN Interface (eth0)	# Realtek Semiconductor Co., Ltd. RTL-8139/8139C/8139C+ DEVICE=eth0 BOOTPROTO=none HWADDR=00:13:F7:A7:A3:4E IPADDR=192.168.200.1 NETMASK=255.255.254.0 ONBOOT=yes TYPE=Ethernet
WAN Interface (eth1)	# Realtek Semiconductor Co., Ltd. RTL-8139/8139C/8139C+ DEVICE=eth1 HWADDR=00:13:f7:a7:d2:72 ONBOOT=yes NETMASK=255.255.255.0 IPADDR=10.0.0.55 GATEWAY=10.0.0.1 TYPE=Ethernet
Polymath.conf (polymath-1.0-8a2)	# format: key <tab> value mysql_host 127.0.0.1 mysql_user root #mysql_password password mysql_dbname imsi

Confidential

	<pre> iptables_nat_chain PREROUTING iptables_nat_target POLYPOSTACCEPT iptables_log_chain POLYMATHFORWARD iptables_log_target_in NOBIT iptables_log_target_out ACCEPT service_port 7825 discovery_port 7826 use_plain_socket true ssl_certificate polymath.cert ssl_privatekey polymath.key license Example.lic license_ifname eth1 polymath_addr 127.0.0.1 dhcp_ifname eth0 client_timeout_prepaid 600 client_timeout_postpaid 1800 validate_interval 60 inner_ifname eth0 #tc tc_ifbw 100 tc_ifavpkt 1000 tc_allowport 3128,8080 # using by routing outer_ifnames eth1 #outer_ifnames eth1,eth2 #eth1_weight 1 #eth2_weight 1 #eth1_gateway 192.168.149.1 #eth2_gateway 192.168.150.1 </pre>
Dhcp server (/etc/dhcpd.conf)	<pre> DHCP Address rank 192.168.200.50-192.168.201.250 subnet-mask 255.255.255.0 domain-name-servers 203.144.255.71,203.144.255.72 default-lease-time 21600; max-lease-time 43200; gateway 192.168.200.1 </pre>
DNS server (/etc/resolve.conf)	<pre> Primary 203.144.255.71 Secondary 203.144.255.72 </pre>

ADSL Modem

Parameter	Value
Connection Type (True ADSL)	Bridge Mode VPI 0 VCI 100

Load Balance Configuration (Tactio 2 Ports)

Parameter	Value																				
User / Password	admin / xxxxxxxx																				
WAN Status	WAN1 User: : xxxxxx@truehisp Pass: : xxxxxx Type : PPPoE ADSL 2.5 Mbps (Tel xxxxxx) ----- WAN2 User: : xxxxxxxx@truehisp Pass: : xxxxxxxx Type : PPPoE ADSL 2.5 Mbps (Tel xxxxxxxx)																				
LAN Status	LAN status: IP address : 10.0.0.1 MAC address : 00:D0:DA:00:39:D5 Mask : 255.255.255.0 Dhcp status : Enable Dhcp IP Start : 10.0.0.30 - 10.0.0.70 DNS IP address: 203.144.255.71																				
Dynamic DNS	Status : Enable DDNS Provider: dyndns.org User Hostname: Example.dyndns.org																				
Remote Control	Remote Control: Status : Enable Remote IP: 0.0.0.0 Port No : 8888																				
Virtual Server:	<table style="width: 100%; border-collapse: collapse;"> <thead> <tr> <th style="text-align: left;">ID</th> <th style="text-align: left;">Global_Port</th> <th style="text-align: left;">Local_Port</th> <th style="text-align: left;">Local_IP_address</th> <th style="text-align: left;">Status</th> </tr> </thead> <tbody> <tr> <td colspan="5" style="text-align: center;">-----</td> </tr> <tr> <td style="text-align: center;">1</td> <td style="text-align: center;">22</td> <td style="text-align: center;">22</td> <td style="text-align: center;">10.0.0.55</td> <td style="text-align: center;">Enable</td> </tr> <tr> <td style="text-align: center;">2</td> <td style="text-align: center;">80</td> <td style="text-align: center;">80</td> <td style="text-align: center;">10.0.0.55</td> <td style="text-align: center;">Enable</td> </tr> </tbody> </table>	ID	Global_Port	Local_Port	Local_IP_address	Status	-----					1	22	22	10.0.0.55	Enable	2	80	80	10.0.0.55	Enable
ID	Global_Port	Local_Port	Local_IP_address	Status																	

1	22	22	10.0.0.55	Enable																	
2	80	80	10.0.0.55	Enable																	